

smoothwall[®]

The Web You Want

Smoothwall Connect Filter

**Smoothwall Connect Filter for Mac OS Installation
and Administration Guide**

Smoothwall® Smoothwall Connect Filter, Installation and Administration Guide, July 2014

Smoothwall publishes this guide in its present form without any guarantees. This guide replaces any other guides delivered with earlier versions of Smoothwall Connect Filter.

No part of this document may be reproduced or transmitted in any form or by any means, electronic or mechanical, for any purpose, without the express written permission of Smoothwall.

For more information, contact: docs@smoothwall.net

© 2001 – 2014 Smoothwall Ltd. All rights reserved.

Trademark notice

Smoothwall and the Smoothwall logo are registered trademarks of Smoothwall Ltd.

Linux is a registered trademark of Linus Torvalds. Snort is a registered trademark of Sourcefire INC.

DansGuardian is a registered trademark of Daniel Barron. Microsoft, Internet Explorer, Window 95, Windows 98, Windows NT, Windows 2000 and Windows XP are either registered trademarks or trademarks of Microsoft Corporation in the United States and/or other countries. Netscape is a registered trademark of Netscape Communications Corporation in the United States and other countries. Apple and Mac are registered trademarks of Apple Computer Inc. Intel is a registered trademark of Intel Corporation. Core is a trademark of Intel Corporation.

All other products, services, companies, events and publications mentioned in this document, associated documents and in Smoothwall software may be trademarks, registered trademarks or service marks of their respective owners in the UK, US and/or other countries.

Acknowledgements

Smoothwall acknowledges the work, effort and talent of the Smoothwall GPL development team:

Lawrence Manning and Gordon Allan, William Anderson, Jan Erik Askildt, Daniel Barron, Emma Bickley, Imran Chaudhry, Alex Collins, Dan Cuthbert, Bob Dunlop, Moira Dunne, Nigel Fenton, Mathew Frank, Dan Goscomb, Pete Guyan, Nick Haddock, Alan Hourihane, Martin Houston, Steve Hughes, Eric S.

Johansson, Stephen L. Jones, Toni Kuokkanen, Luc Larochelle, Osmar Lioi, Richard Morrell, Piere-Yves Paulus, John Payne, Martin Pot, Stanford T. Prescott, Ralf Quint, Guy Reynolds, Kieran Reynolds, Paul Richards, Chris Ross, Scott Sanders, Emil Schweickerdt, Paul Tansom, Darren Taylor, Hilton Travis, Jez Tucker, Bill Ward, Rebecca Ward, Lucien Wells, Adam Wilkinson, Simon Wood, Nick Woodruffe, Marc Wormgoor.

Smoothwall Connect Filter contains graphics taken from the Open Icon Library project <http://openiconlibrary.sourceforge.net/>

Address	Smoothwall Limited 1 John Charles Way Leeds. LS12 6QA United Kingdom
Email	info@smoothwall.net
Web	www.smoothwall.net
Telephone	USA and Canada: 1 800 959 3760 United Kingdom: 0870 1 999 500 All other countries: +44 870 1 999 500
Fax	USA and Canada: 1 888 899 9164 United Kingdom: 0870 1 991 399 All other countries: +44 870 1 991 399

Contents

	About This Guide	1
	Audience and Scope	1
	Organization and Use	1
	Conventions.....	2
	Related Documentation.....	2
Chapter 1	Introduction to the MobileProxy Client.....	3
	About the MobileProxy Client	3
	Supported Operating Systems	4
Chapter 2	Preparing Your Smoothwall System	5
	Enabling and Configuring MobileProxy	5
	Configuring MobileProxy Servers	6
	Managing MobileProxy Servers	6
	Generating Client Keys.....	7
	Generating Server Keys.....	7
	Installing a Server Key on the MobileProxy Server	7
	Configuring Smoothwall Connect Filter User Credentials.....	8
Chapter 3	Installing a Smoothwall Connect Filter Client on Devices.....	9
	About the Installation.....	9
	Installing a Smoothwall Connect Filter Client	10
	About Command Line Installations	11
	Removing a Smoothwall Connect Filter Client	11
Chapter 4	Using the Smoothwall Connect Filter Client	13
	About the Smoothwall Connect Filter Client Interface.....	13
	About the Smoothwall Connect Filter Client System Preferences	14

Index..... 15

About This Guide

Smoothwall Connect Filter for Mac OS is a web redirector for Mac OS devices.

This manual provides guidance for installing Smoothwall Connect Filter for Mac OS.

Audience and Scope

This guide is aimed at system administrators maintaining and deploying Smoothwall Connect Filter.

This guide assumes the following prerequisite knowledge:

- An overall understanding of the functionality of the Smoothwall System application
- An overall understanding of the functionality of the Smoothwall Connect Filter application
- An overall understanding of networking concepts

Organization and Use

This guide is made up of the following chapters and appendices:

- *Chapter 1, Introduction to the MobileProxy Client* on page 3
- *Chapter 2, Preparing Your Smoothwall System* on page 5
- *Chapter 3, Installing a Smoothwall Connect Filter Client on Devices* on page 9
- *Chapter 4, Using the Smoothwall Connect Filter Client* on page 13
- *Index* on page 15

Conventions

The following typographical conventions are used in this guide:

Item	Convention	Example
Key product terms	Initial Capitals	Smoothwall Connect Filter for Mac OS
Cross-references and references to other guides	<i>Italics</i>	See <i>Chapter 1, Introduction to the MobileProxy Client</i> on page 3
Filenames and paths	Courier	The <code>portal.xml</code> file
Variables that users replace	Courier Italics	<code>http://<my_ip>/portal</code>
Smoothwall System	This may be one of: <ul style="list-style-type: none">• Guardian• Network Guardian• Secure Web Gateway• Unified Threat Management• WAM-Edge depending on the license purchased	

This guide is written in such a way as to be printed on both sides of the paper.

Related Documentation

The following guides provide additional information relating to the Smoothwall Connect Filter

- *Smoothwall Connect Filter for iOS Installation and Administration Guide*, which describes how to install and configure the Smoothwall Connect Filter client for iOS devices
- *Smoothwall Connect Filter for Windows Installation and Administration Guide*, which describes how to install and configure the Smoothwall Connect Filter client for Windows devices

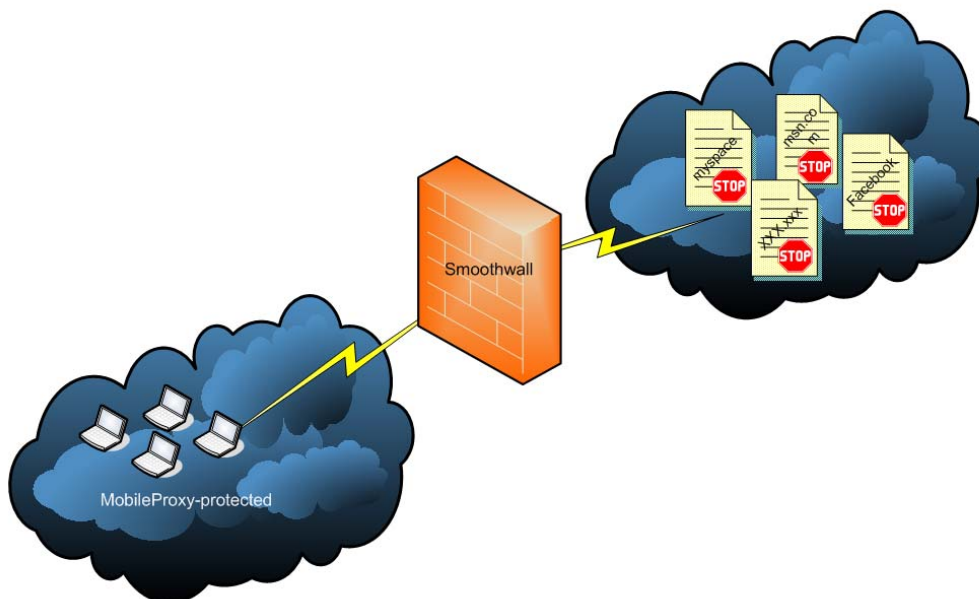
1 Introduction to the MobileProxy Client

This chapter provides an overview of Smoothwall Connect Filter, including:

- *About the MobileProxy Client* on page 3
- *Supported Operating Systems* on page 4

About the MobileProxy Client

Smoothwall Connect Filter is a proxy redirector for Mac OS clients and devices. It enables you to enforce your organization's web content filtering policy on Mac OS devices owned by your organization.



By installing a Smoothwall Connect Filter client on devices, users' browsers are forced to send web content requests, both HTTP and HTTPS, to Smoothwall proxies. Smoothwall proxies then enforce your organization's web content filtering policy by blocking undesirable and malicious content.

The following should be considered when using a Smoothwall Connect Filter client:

- You must supply users with Smoothwall System usernames and passwords, as the Smoothwall Connect Filter client prompts users to authenticate themselves when they start to browse.

For a detailed description of how to set this up, see *Configuring Smoothwall Connect Filter User Credentials* on page 8

- Users cannot remove the Smoothwall Connect Filter client unless they are using a device account with administrator privileges.

For more information about removing a Smoothwall Connect Filter installation, see *Removing a Smoothwall Connect Filter Client* on page 11.

- It is recommended that you tell users that a Smoothwall Connect Filter client has been installed on their devices, that web content is being filtered, and their browsing is being logged.
- It is recommended that you provide users with a way of reporting problems with over- or under-blocking of pages, so that you can adjust your policy to suit your organization.

Supported Operating Systems

The Smoothwall Connect Filter client supports the following operating systems on devices:

- Mac OS® X (Snow Leopard) or later

2 Preparing Your Smoothwall System

Before you can install Smoothwall Connect Filter, the following must be configured on your Smoothwall System:

- *Enabling and Configuring MobileProxy* on page 5
- *Generating Client Keys* on page 7
- *Generating Server Keys* on page 7
- *Configuring Smoothwall Connect Filter User Credentials* on page 8

Note: If running a Network Guardian system, configure a port forward rule from your firewall to Network Guardian.

Enabling and Configuring MobileProxy

You must enable MobileProxy on your Smoothwall System before installing Smoothwall Connect Filter on your iOS devices. This enables proxy authentication for Smoothwall Connect Filter users.

To enable MobileProxy, do the following:

1. On the Smoothwall System, browse to **Web proxy > Mobileproxy > Settings**.
2. From the **Global options** panel, select **Enable** and click **Save**.
3. Ensure you click **Restart Proxy** when prompted.
4. Browse to **System > Administration > External access**.
5. From the **Interface** drop-down menu, select **External**.
6. From the **Service** drop-down list, select **MobileProxy server (61001)**.
7. Click **Add**.

Your Smoothwall System makes MobileProxy available as an external service.

Note: You will need to open port 61001 on your firewall to allow Smoothwall Connect Filter into the proxy from outside the network.

Configuring MobileProxy Servers

You must configure the proxy servers for Smoothwall Connect Filter to proxy through. Typically, this is your Smoothwall System.

To specify the IP address or hostname, do the following:

1. On the Smoothwall System, browse to **Web proxy > Mobileproxy > Proxies**.
2. Within the **Manage MobileProxy server** panel, configure the following parameters:
 - **Server name** — The name to identify the proxy server.
 - **Server address** — The IP address or hostname of the proxy server. Typically, this is the external IP address of your Smoothwall System. You can also use the IP address that forwards through to your Smoothwall System instead.
 - **Comment** — You can choose to enter optional text about the proxy server.
3. Click **Save** to save your settings.
4. Repeat steps 2 and 3 to add additional proxy servers.

Note: Any additional proxy servers added here, must have the server key of the original proxy server installed. For a detailed description of how to do this, see *Generating Server Keys* on page 7.

Smoothwall Connect Filter also supports proxy exceptions when running in a remote location. Proxy exceptions are URLs or IP addresses that do not need to be redirected through the tunnel to the remote Smoothwall proxy server.

To specify a proxy exception, do the following:

1. On the Smoothwall System, browse to **Web proxy > Mobileproxy > Exceptions**.
2. Enter a valid IP address or hostname for each exception.
3. Click **Save** to save your settings.

For a detailed description of how to configure MobileProxy, refer to your Smoothwall System's Administration Guide.


Managing MobileProxy Servers

All configured proxy servers will appear in the **MobileProxy servers** panel. The order they are listed determines the order of priority, from top to bottom. Smoothwall Connect Filter will try each proxy server until an available proxy responds to requests.


You can change the priority order by dragging and dropping the servers in the **MobileProxy servers** panel into the required order.

You can also edit and delete servers as required.

To edit a MobileProxy server, do the following:

1. On the Smoothwall System, browse to **Web proxy > Mobileproxy > Proxies**.
2. Click the **Edit**  button for the configured MobileProxy server.
The configured parameters will appear in the **Manage MobileProxy server** panel.
3. Change the parameters as required, and click **Save**.

To delete a MobileProxy server, do the following:

1. On the Smoothwall System, browse to **Web proxy > Mobileproxy > Proxies**.
2. Click the **Delete**  button for the configured MobileProxy server.
3. Confirm the correct MobileProxy server, and click **Delete**.

Generating Client Keys

Each iOS device running Smoothwall Connect Filter must have a client key installed. MobileProxy requires the client key to authenticate the iOS device requesting web traffic redirection.

To generate a client key, do the following:

1. On the Smoothwall System, browse to **Web proxy > Mobileproxy > Settings**.
2. From the **Manage MobileProxy keys** pane, click **Download**.
3. Make the client key accessible to the device on a secure server or download it to the iOS device.

Generating Server Keys

All MobileProxy servers listed in the **MobileProxy servers** panel must have the same MobileProxy server key installed. This forces the Smoothwall Connect Filter to only use a limited number of MobileProxy servers. This has the advantage of load-balancing the web traffic from a large number of Smoothwall Connect Filter's across a number of MobileProxy servers.

To generate a server key, do the following:

1. On the Smoothwall System which supplied the client key (see *Generating Client Keys* on page 7), browse to **Web proxy > Mobileproxy > Settings**.
2. From the **Manage MobileProxy keys** pane, click **Advanced >>**.
Two **Download** button options are available:
 - Download MobileProxy client key
 - Download MobileProxy server key
3. Click the bottom **Download** button to download the server key.
4. Make the server key accessible to other MobileProxy servers or manually upload it. For more information, see *Installing a Server Key on the MobileProxy Server* on page 7.

Installing a Server Key on the MobileProxy Server

You can install the server key using one of two methods:

- By downloading it from the Smoothwall System which supplied the MobileProxy client key, then manually uploading it to each MobileProxy server. For a detailed description of how to do this, see below.
- Replicating it from the Smoothwall System which supplied the MobileProxy client key.
Your Smoothwall System must be part of a centrally managed solution for the replication to be successful. For a detailed description of how to setup and manage a centrally managed Smoothwall System, refer to your Smoothwall System's Administration Guide.

To manually upload a server key to the MobileProxy server, do the following:

1. Log into the other Smoothwall System, browse to **Web proxy > Mobileproxy > Settings**.
2. From the **Manage MobileProxy keys** pane, click **Advanced >>**.
3. Click **Choose File** and browse to the server key.
4. Click **Upload** and the server key will be made available. Smoothwall Connect Filter will now be able to connect to the proxy server.

Configuring Smoothwall Connect Filter User Credentials

Smoothwall Connect Filter requires user authentication for both local and remote internet access. Usernames and passwords for Smoothwall Connect Filter users must be setup in your Smoothwall System first, via your configured directory services, or as local users.

To configure MobileProxy Local User credentials, do the following:

1. On the Smoothwall System, browse to **Services > Authentication > Directories**.
2. Expand the **Local users** directory tree.
3. Configure your MobileProxy user accounts as required.

For a detailed description of how to configure local users, and other directory services, refer to your Smoothwall System's Administration Guide.

For a detailed description of authentication and how to configure it, refer to your Smoothwall System's Administration Guide.

Note: Smoothwall Connect Filter also supports user authentication from account directories, such as Active Directory.

3 Installing a Smoothwall Connect Filter Client on Devices

This chapter describes how to install a Smoothwall Connect Filter client on a Mac OS device, including:

- *About the Installation* on page 9
- *Installing a Smoothwall Connect Filter Client* on page 10
- *About Command Line Installations* on page 11
- *Removing a Smoothwall Connect Filter Client* on page 11

About the Installation

A Smoothwall Connect Filter client can be installed on Mac OS devices using either of the following methods:

- **Manually** — To install manually, the Smoothwall Connect Filter client software must be made available to the Mac OS device. For a detailed description of how to install the software manually, see *Installing a Smoothwall Connect Filter Client* on page 10.
- **From the command line** — For more information, see *About Command Line Installations* on page 11.
- **Deploying enterprise-wide** — Both `NetInstall` and Simian Munki can be used for deployment as long as they support the standard Apple PackageMaker format. However, the preferred method is to use `NetInstall`. For more information, consult your Mac OS Server documentation. If you are using Google's Simian for Mac OS X package deployment, refer to <http://code.google.com/p/simian/>.

After installation, the Smoothwall Connect Filter client will attempt to connect to your Smoothwall System in order to download proxy server and content exception information. You should ensure this access is available.

Note: To ensure a high level of security, any installation of a Smoothwall Connect Filter client should be done in a controlled environment, for example, on your organization's network by trusted administrators.

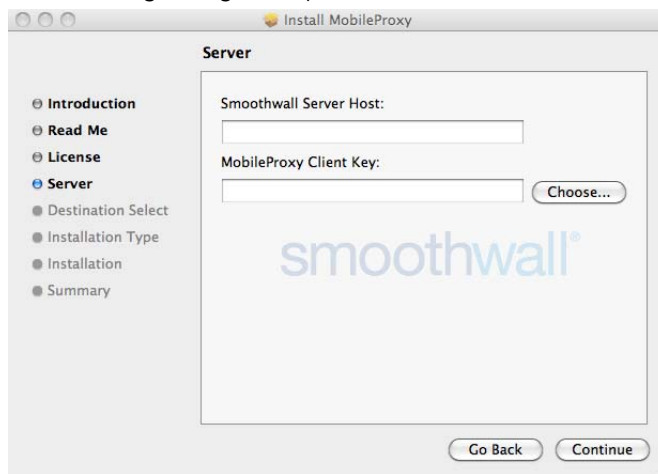
Installing a Smoothwall Connect Filter Client

Note: You must use an account with administrator privileges to install a Smoothwall Connect Filter client.

To install a Smoothwall Connect Filter client , do the following:

1. Make the client key (see *Generating Client Keys* on page 7) and the Smoothwall Connect Filter client software package (`MobileProxy.pkg`) accessible to the Mac OS device on a secure server or by downloading them to the device.
2. On the device, open the Smoothwall Connect Filter client package (`MobileProxy.pkg`).
3. Click **Continue** until you are prompted to for the license agreement.
4. Click **Agree** for the license information.

The following dialog box opens:



5. Configure the following parameters:
 - **Smoothwall Server Host** — The IP address or hostname of the Smoothwall System which generated the client key.
 - **MobileProxy Client Key** — Click **Choose** and browse to the location of the client key. The Smoothwall Connect Filter client downloads the client key.

Confirm your changes and click **Continue**.

6. Highlight **Install for all users of this computer** and click **Continue**.
7. Change the installation location if required, then click **Install** to start the installation process.
8. Enter the master or administrator's username and password for the Mac OS device when prompted.

9. Click **Continue Installation**.
10. You will be prompted to restart the device when the installation has finished.
11. After restarting, you will be prompted to log in again with the master or administrator credentials.

The Smoothwall Connect Filter client will attempt to connect to the designated Smoothwall System to download the proxy and proxy exception details.

Tip: If there is a problem accessing your Smoothwall System, browse to **System > Administration > External access** and ensure that external access for the Smoothwall Connect Filter server service has been enabled.

About Command Line Installations

MobileProxy.pkg is created using Apple®'s standard PackageMaker tool. This enables you to install it from the command line or using an enterprise deployment tool.

To install from the command line, do the following:

1. Create a settings plist file, containing the Smoothwall server IP address, port and the SSL key.
2. Save the file to:

```
/Library/Application Support/Smoothwall/settings.plist
```

```
/Library/Application Support/Smoothwall/mgclient_key
```

3. Open a command window and enter the following command:

```
sudo installer -pkg ~/<Myfolder>/MobileProxy-X.xx.pkg -target /
```

where:

- *Myfolder* is the location of where MobileProxy.pkg is stored
- *x* is the version number, if relevant
- *xx* is the date stamp, if relevant

Removing a Smoothwall Connect Filter Client

Note: You must use an account with administrator privileges to remove the Smoothwall Connect Filter client.

To remove a Smoothwall Connect Filter client, do the following:

1. On the device, click on the Smoothwall Connect Filter icon in the top status bar.
2. Select **Preferences**.
3. Click **Uninstall**. When prompted, click **OK** to confirm you want to remove it.
4. Enter the device's password and click **OK**.

The Smoothwall Connect Filter client is removed from the device.

4 Using the Smoothwall Connect Filter Client

This chapter describes how to use the Smoothwall Connect Filter client, including:

- *About the Smoothwall Connect Filter Client Interface* on page 13
- *About the Smoothwall Connect Filter Client System Preferences* on page 14

About the Smoothwall Connect Filter Client Interface

Once installed, you access the Smoothwall Connect Filter client by clicking on the Smoothwall Connect Filter icon in the top menu bar. The following menu options are available:

- **MobileProxy** — This menu option provides status information about the status of the Smoothwall Connect Filter client, including:
 - **Connecting** — The Smoothwall Connect Filter client is connecting and authenticating with the configured Smoothwall System. This is displayed after installation, at log in, and whenever the client is refreshed.
 - **Updating** — The Smoothwall Connect Filter client is downloading and applying proxy details and proxy exception lists from the configured Smoothwall System.
 - **No Proxies** — The Smoothwall System did not return any proxy details. This message may be displayed at any time, after updating. This message is not necessarily an error, it may be that proxy information is not configured on that Smoothwall System.
 - **Authentication Failed** — Authentication for the Smoothwall Connect Filter client has failed. This may be because the Smoothwall Connect Filter client is unable to connect to the Smoothwall System.
 - **Settings Error** — The settings file, containing the Smoothwall System IP address, cannot be found, or contains missing or invalid settings. Reasons for this could be missing parameters, incorrect format or wrong file permissions.

- **SSL Key File Error** — The Smoothwall Connect Filter client key file cannot be found or is inaccessible.
- **Connected** — The Smoothwall Connect Filter client has authenticated with the Smoothwall System proxy server and web traffic is now being filtered.
- **Idle** — There are no errors but the Smoothwall Connect Filter client is not connected to a Smoothwall System proxy server. This is the initial state before a connection is attempted.
- **IP address** — This menu option displays the IP address of the connected Smoothwall System proxy server.
- **Refresh** — This menu option refreshes the displayed information.
- **Preferences** — This menu option provides access to the Smoothwall Connect Filter client system preferences. For more information, see *About the Smoothwall Connect Filter Client System Preferences* on page 14.

About the Smoothwall Connect Filter Client System Preferences

The following section discusses the Smoothwall Connect Filter client system preferences.

To access the Smoothwall Connect Filter client system preferences, do the following:

- Click on the Smoothwall Connect Filter icon in the top status bar and select **Preferences**.

The Smoothwall Connect Filter client system preferences are displayed:



The following system preferences are available:

- **Show All** — This option shows all system preferences, if hidden.
- **Proxy** — This option displays the IP address of the connected Smoothwall System proxy server. If more than one proxy server is configured and available, you can choose a different proxy server from the drop-down list.
- **Refresh...** — This option refreshes the displayed information.
- **Open Log File...** — This option displays the Smoothwall Connect Filter log file.
- **Uninstall...** — This option removes Smoothwall Connect Filter from the device. For more information, see *Removing a Smoothwall Connect Filter Client* on page 11.

Index

C

client key 7

I

installation 9
 command line 11
interface 13

M

MobileProxy 5
 configuring 5
 enable 5
MobileProxy client 3

P

prerequisites 5

S

Smoothwall Connect Filter 3
supported operating systems 4
system preferences 14

U

uninstalling 11
user credentials 8
username 8

smoothwall[®]

The Web You Want